

Oxygen Transfer Technology

EFFICIENCY BY DESIGN



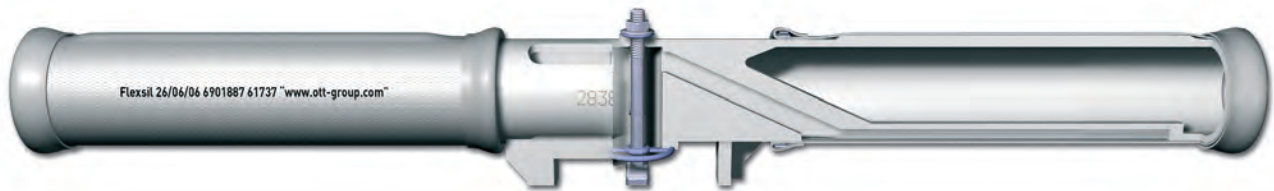
POD



OTT PODs – Panel Of Diffusers.

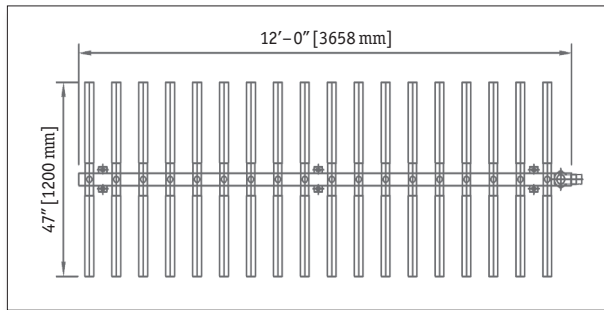
OTT PODs are highly efficient aeration modules used in municipal and industrial wastewater treatment. Easy to install, they can be combined in flexible configurations with a wide range of available options.

PODs are the quick and versatile solution for original equipment or capacity upgrades of wastewater treatment facilities.



The proven quality and technology of **MAGNUM**® fine-bubble tube diffusers

ensure highest performance and cost effectiveness of OTT PODs. Each standard 1.2 m [4 ft] module holds 3 – 7 diffusers incorporating tried-and-tested **FLEXSIL**® or **FLEXNORM**® membranes with optimized perforation for any application. Diffuser length and configuration within the module can be customized as well for special applications.



POD equipped with MAGNUM® 1000 diffusers – alternative configurations with MAGNUM® 1500 or MAGNUM® 2000 are available.



Aeration basin with PODs.

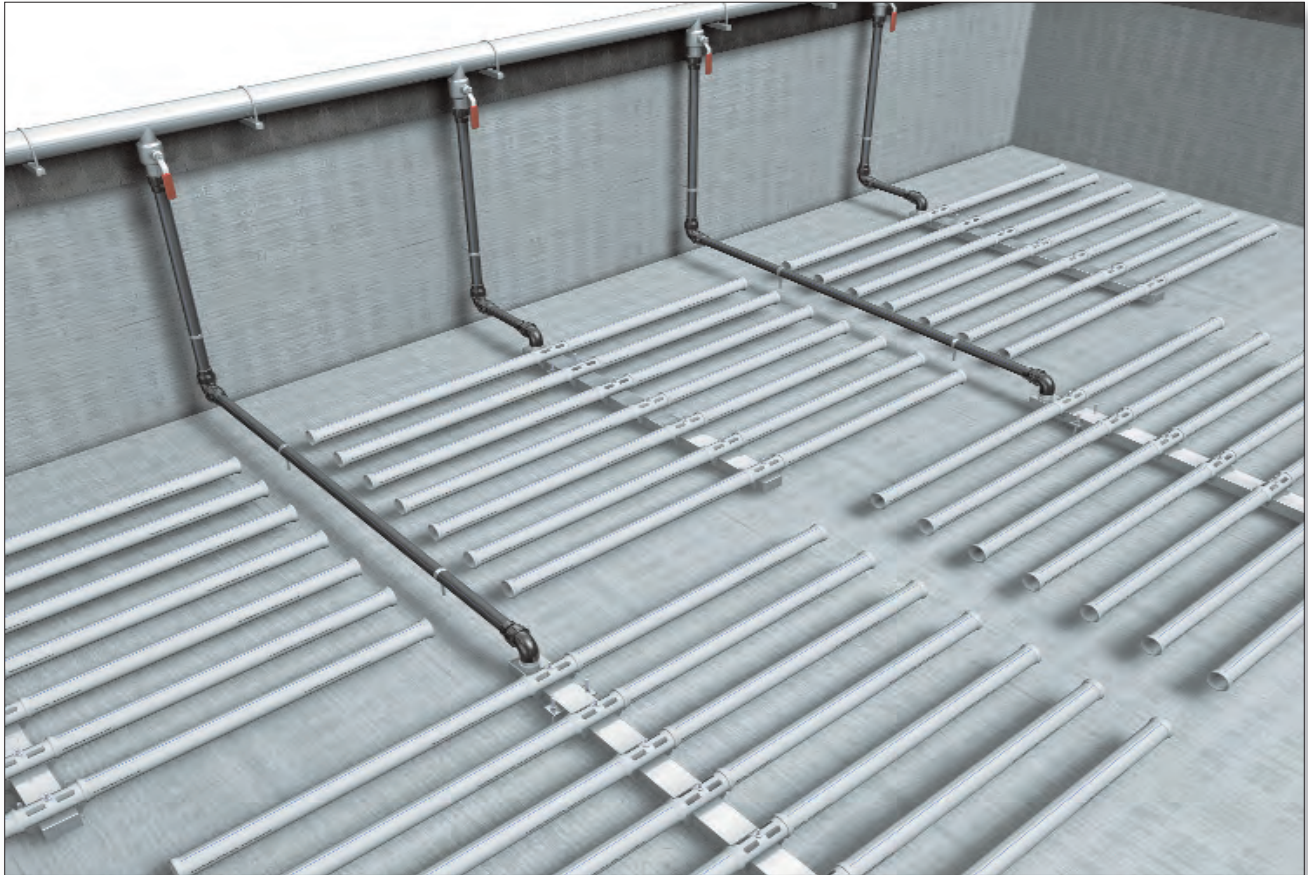
Air supply to the diffuser grid modules is provided through plastic pipes and threaded connection or hoses.

The modules can be connected to the air distribution system individually or jointly as desired.

Tabs welded to the side or brackets hold the OTT PODs securely in a level configuration on the basin floor.



The Advantages at a Glance.

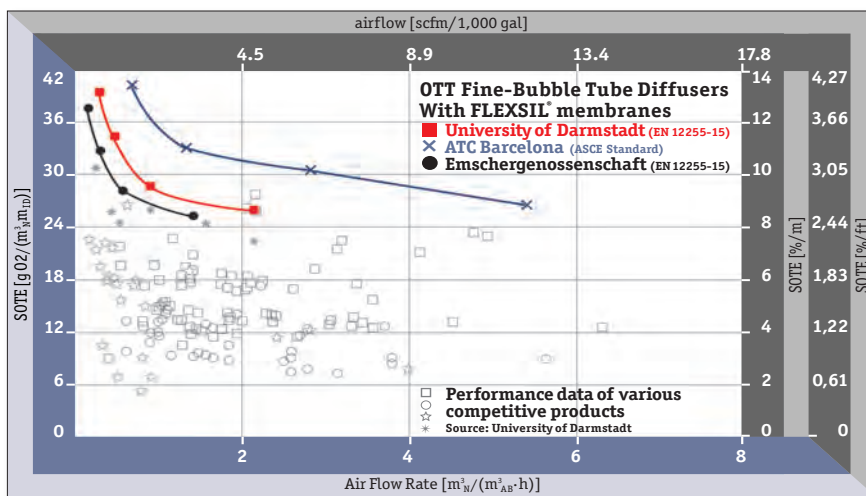


- + Modular Stainless Steel construction
- + Prefabricated design elements
- + Short delivery times with stock units
- + Fast, simple installation
- + Configuration and diffuser array can be selected as desired
- + Quick and flexible integration with air distribution system
- + Can be controlled individually, compatible with all control technologies
- + Ideal for capacity upgrades of existing aeration systems
- + Plain end or Hose connections available

OTT PODs – The efficiency of a panel with greater flexibility and lower cost.



Aeration basin with OTT PODs



Oxygen transfer efficiency data from independent test institutes with full-floor coverage of basin. Complete test reports can be provided on request.

presented by



Member of
**German Water
Partnership**

info@ott-group.com · www.ott-group.com

